

# Monolithic crystal filter

## MQF70.0-1000/07



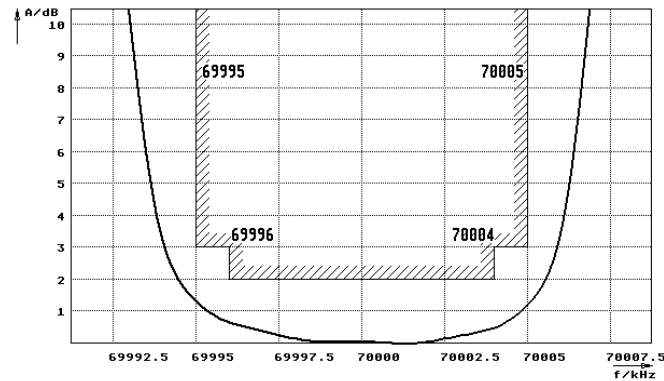
### Application

- 6 pol filter
- i.f.- filter
- use in mobile and stationary transceivers

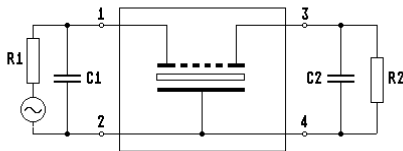
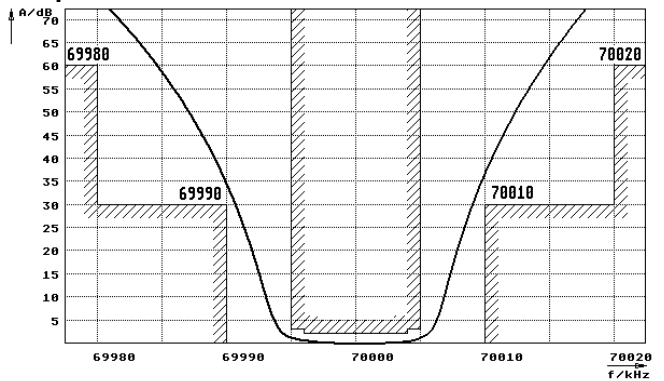
Limiting values		Unit	Value
Center frequency	$f_0$	MHz	70.0
Insertion loss		dB	$\leq 6.0$
Pass band at 3.0 dB		kHz	$\pm \geq 5.00$
Ripple in pass band	$f_0 \pm 4.00$ kHz	dB	$\leq 2.0$
Stop band attenuation	$f_0 \pm 10$ kHz	dB	$\geq 30$
	$f_0 \pm 20$ kHz	dB	$> 60$ except spurious
Terminating impedance $Z$			
R1    C1		Ohm/pF	50    0
R2    C2		Ohm/pF	50    0
Operating temp. range		$^{\circ}\text{C}$	+5... +50

### Characteristics MQF70.0-1000/07

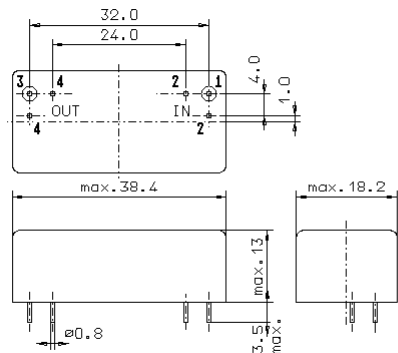
#### Pass band



#### Stop band



- Pin connections:
- 1 Input
  - 2 Ground-Input
  - 3 Output
  - 4 Ground-Output



GM17